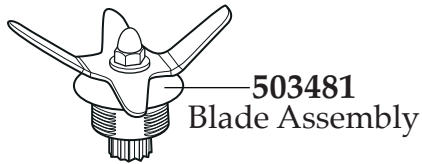


WARING
COMMERCIAL

TORq Blender
2.0

Europe Variable Speed Control

TBB175E



503481
Blade Assembly

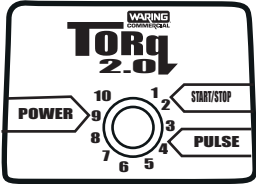


024271
O Ring

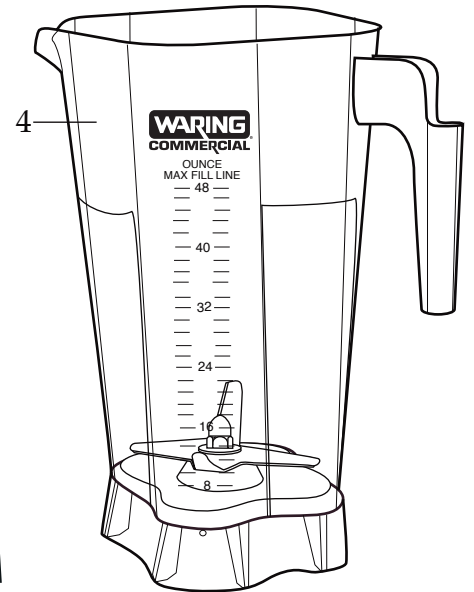
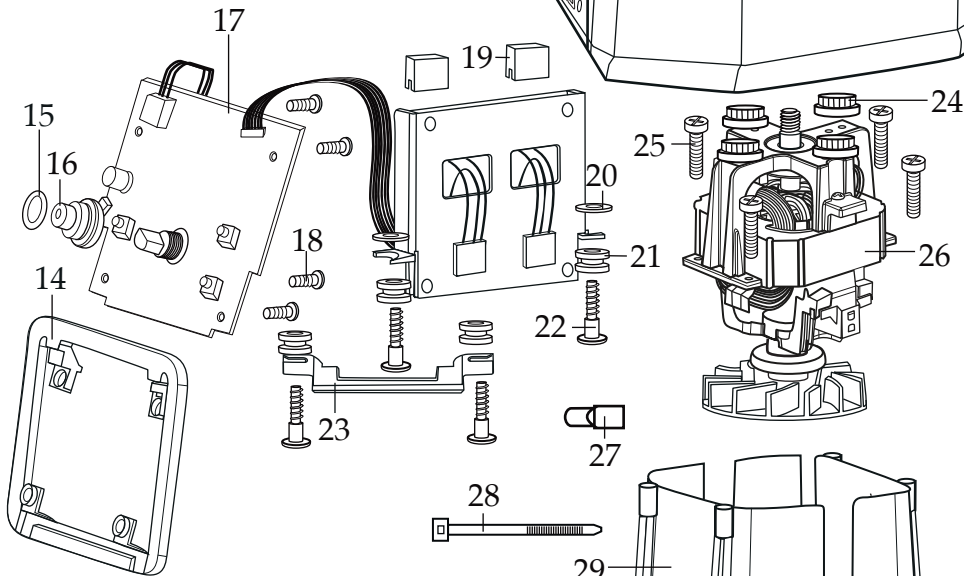
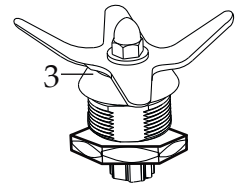
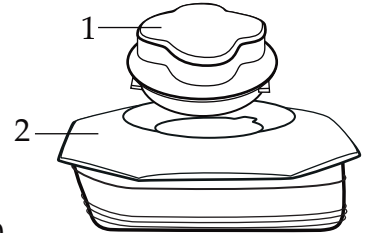
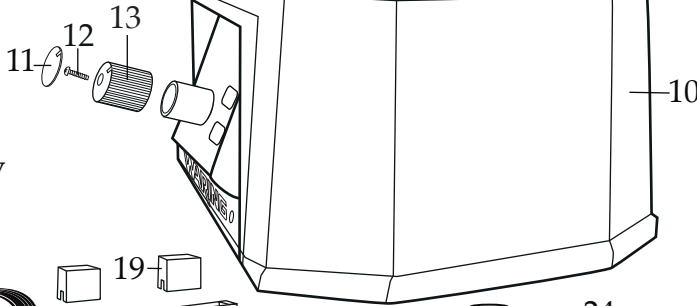


035307
Bearing Holder Nut

035465
Blending Assembly
(with O ring and bearing holder nut)

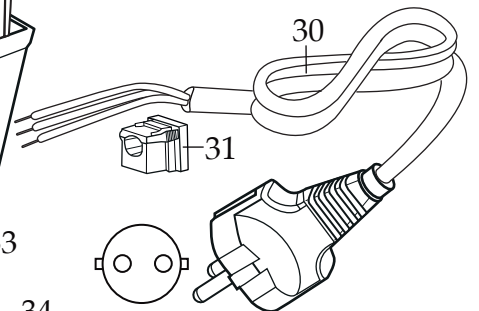
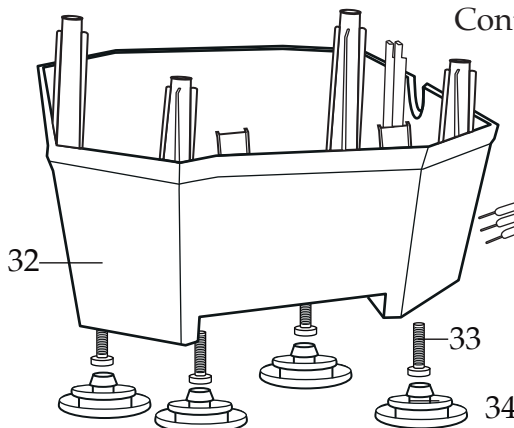
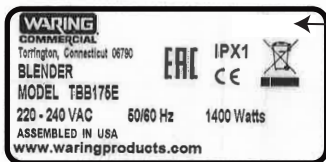


035873
Control Panel Overlay



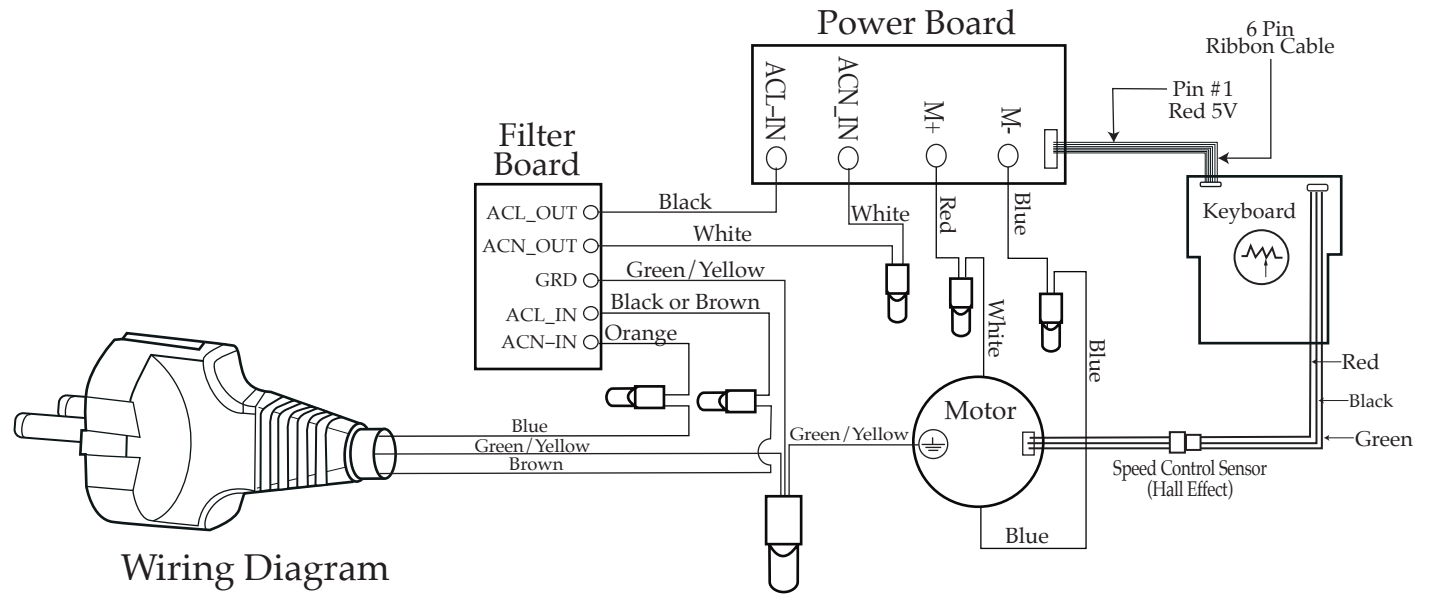
503482
Container with Blending Assembly

Date Code Location
WWYY
(week week year year)



Illustration#	Part#	Description
1	028769-E	Eastman Jar Lid Cover
2	035238-V	Vinyl Jar Lid
3	035465	Blending Assembly (with O ring and bearing holder nut)
4	035239	48 oz. Stackable Container ONLY
5	035885 035091	Jar Pad (<i>changed after 8/2/2018</i>) Jar Pad (use 035885)
6	035085	Hole Plug (4 required)
7	034275	Sems (4 required)
8	034273	B Gasket (4 required)
9	037034 035251	Drive Coupling (<i>on units after 11/15/2019</i>) Drive Coupling
10	503460-175-E	Top Housing Assembly
11	035757	Knob Cover
12	026267	Screw
13	036498	Speed Control Knob
14	035237	Back Bezel Control Housing
15	018389	O Ring
16	036499	Speed Control Knob Insert
17	035420	Control Panel
18	035090	Screw (4 required)
19	034900	PCB Cushion (2 required)
20	013604	Washer (<i>4 required on units after 8/9/2018</i>) - (2 required)
21	034904	Rubber Grommet (4 required)
22	034902	Sems (4 required)
23	035894	Control Board Bracket
24	034272	A Gasket (4 required)
25	034274	Screw (4 required)
26	035817	Chiaphua Motor with Sensor
27	012409	Small Crimp Connectors (6 required)
28	013731	Cable Ties (6 required)
29	503483	Motor Housing with Dampeners
30	017948	Cordset

Illustration#	Part#	Description
31	033619	Strain Relief
32	035079	Bottom Housing ONLY
	503480	Bottom Housing with Feet
33	034274	Screw (4 required)
34	035088	Foot (4 required)



Wiring Diagram